

Approccio metodologico per la valutazione microclimatica: Caso studio Villa Blanc (Roma)

2010



2018

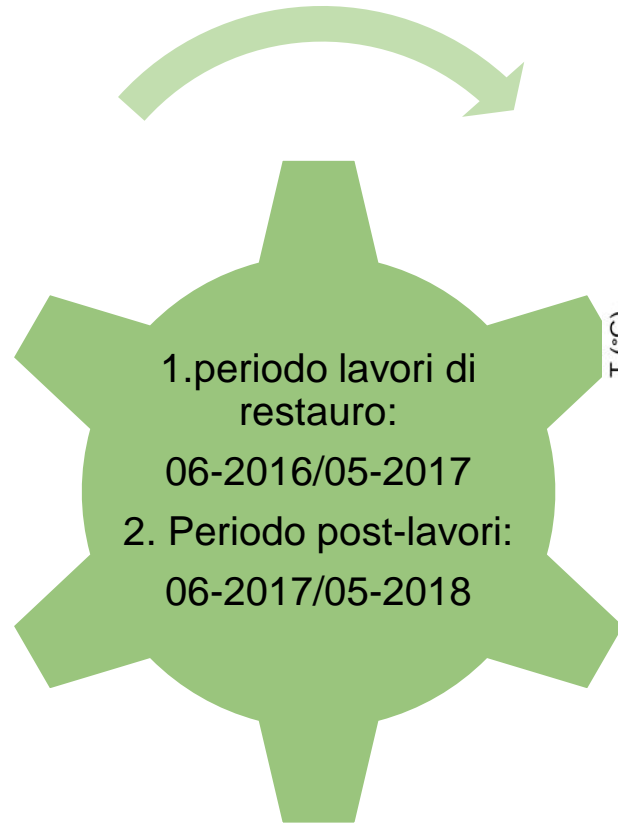





2018



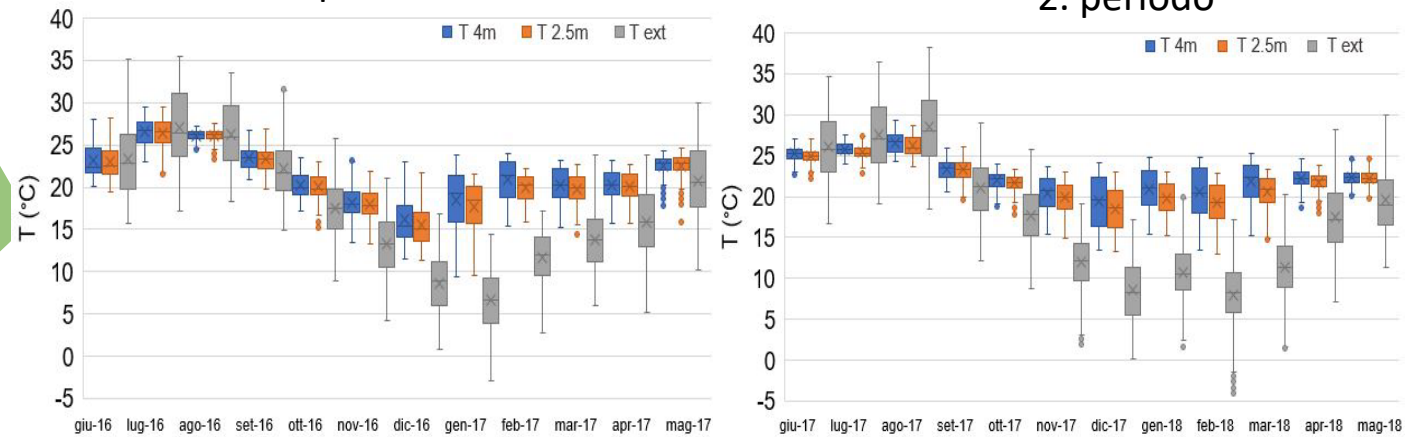
Caso studio Villa Blanc (Roma)

Anna Maria Siani, Francesca Frasca, Elena Verticchio, Beatrice Bertolucci, Gabriele Favero _ Università di Roma Sapienza



 Termoigrometro esterno
 Termoigrometri interni (2.5m e 4m)
 Sensore di CO₂

1. periodo **Temperatura** 2. periodo



Umidità relativa

